

MEDIADICE[®] COMBO DISINTEGRATOR (MD-HTP-CMB)
Double the Drives, One Shredder

The highest thru-put on the market!



ACCEPTABLE MEDIA



HDD



Enterprise-HDD



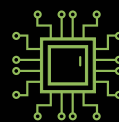
SSD



Enterprise SSD



E-Waste



Circuit Boards



Hybrid HDD



USB/Flash Drive



Cell/Smart Phone



PDA



Tablet



Credit Card



DVD



NVMe/PCIe

THE ULTIMATE SOLUTION FOR HIGH-VOLUME DRIVE DESTRUCTION

The MediaDice® Combo Disintegrator is the most efficient and reliable option to handle large quantities of HDDs and SSDs on the market today. Engineered to deliver top-tier performance and convenience, this machine is the best choice for data centers and warehouses needing high-volume data destruction.

Unmatched speed. Shred over **1,000** HDDs per hour into precise 20mm strips and over **7,200** SSDs per hour into secure 5mm pieces.

Cost-Effective. Built for large volume shred events, the MediaDice® Combo Disintegrator reduces the cost per drive, making it an economical choice.



Enhance security and efficiency with optional upgrades like the MediaVision™ scanner for secure intake, reporting and automatic COD creation. Add a Gaylord for quick and easy disposal of shredded media. This machine can be outfitted to your needs.

Auto Un-Jam Functionality. Say goodbye to downtime and manual fixes. The auto un-jam feature ensures continuous operation by automatically resolving any jams. This innovative design means you never have to open the machine for manual adjustments, ensuring a smooth and hassle-free shredding experience.

User-Friendly Touchscreen control. Managing the MediaDice® Combo Disintegrator is a breeze with its fully integrated touchscreen control. This intuitive interface allows you to easily start, stop, and monitor the shredding process. The touchscreen eliminates the need for technical intervention, making the operation straightforward and accessible to all staff.

Perfect for All Types of Drives:

High-Capacity HDDs: Whether you're dealing with 20 TB HDDs, HAMR, MAMR or other enterprise-grade hard drives, the MediaDice® Combo Disintegrator can shred them all with ease.

Enterprise SSDs: From standard SSDs to high-end enterprise SSD drives, this machine can handle it all, reducing them to 5mm pieces quickly and efficiently.

COMBO DESTRUCTION STAGES:

- **SSD Stage:** Shred down any SSD to 5mm strips.
- **HDD Stage:** Shred down any HDD to 20mm strips.

KEY FEATURES AND BENEFITS

- Extremely fast shredding capabilities shredding over 1,000 HDD an hour down to 20mm strips or 7,200 SSDs an hour down to 5mm strips.
- Intuitive 7" LCD touch screen interface controls all security access and operational functions.
- Password-controlled access to user, administrator, and service functions.
- Cycle counter to track volume of media destroyed and maintenance required.
- Floor mounted with leveling feet and built-in casters for mobility.
- Automatic jam recovery.

BUILT-IN ENVIRONMENTAL HEALTH AND SAFETY

- Debris accumulates into one bin that can be easily rolled away for efficient disposal.
- HEPA Filtration system traps any potentially harmful airborne particulates from the crushing and shattering of circuit boards, electronic components, and silicon-based integrated circuit chips.
- RFI and EMI Suppression to minimize interference with other electronic equipment in the vicinity.
- Noise suppression below 85db, the OSHA acceptable threshold for the workplace.

TECHNICAL SPECIFICATIONS - CMB

Dimensions	53" (134cm) Height (floor to top of the machine) 74" (187cm) Length (front left to right) 30" (76.5cm) Width (front to the back of the machine)
Weight (excludes packing and crating)	2,800 lbs./ 1,270 kg.
Shipping Weight (includes packing, crating, pallet)	3,130 lbs./1,420 kg.
Shipping Dimensions	63" (160cm) x 37" (93cm) x 79" (203cm) (H x L x W)
Power Requirement (voltage/frequency/current)	See the label on the left side of your machine for specific factory settings 400-480 Volts A.C. industrial power, 3-phase, 50/60 Hz, 50 Amps., connected to the electrical panel using supplied 4 AWG wire. UL and IEC panels and electrical components are for safety.
Current Drawn	7.0 Amps (no load) at 480 Volts A.C., 3-phase, 50/60 Hz
Power Cord Included	Length: 20 ft. (6 m) 4 AWG, 4 Conductor, UL 498, IEC 309-1 and 309-2 480V 3P+Earth/ground.
Ambient Operating Temperature	40 - 100 °F (4 - 37.8°C)
Media Sanitization Modality	A dual-opening device featuring single-stage destruction. Shreds HDDs into 20mm strips. Shreds SSDs down to 5mm strips.
Acceptable Media	It can be equipped with a MediaVision Secure Scanner to enhance media scanning and cataloging upon insertion. It supports various media, including HDDs, SSDs, PCIe/NVMe devices, PDAs, SIM cards, smartphones, tablets, laptops, circuit boards, and USB drives.
Media Sanitization Throughput	<i>Based on media type and standard form factor testing</i> Standard 3.5" HDD: 1,000/hr • Enterprise 3.5" HDD: 600/hr Standard 2.5" SSD: 7,200/hr • Enterprise 2.5" SSD: 3,000/hr
Feed Opening	HDD: 11" X 2" (274mm x 50mm) SSD: 5" x 1" (114mm x 18.5mm)
Machine Control/Monitoring	Switch on manually. Security access, machine control, and Status via PLC touch screen.
Deployment/Transportability	Floor mounted. Has built-in casters for mobility with optional leveling feet and seismic tie-downs for stability.
Debris Collection	Media is shredded and deposited into a collection bin.
Jam/Unjam	Automatically recovers from a media jam or shuts down if recovery is unsuccessful, allowing for manual unjamming.
Safety	Fully automatic and hands-free. The machine will not operate if the safety interlocks are not engaged, ensuring that hands or clothing cannot be accidentally caught in the moving parts. The user never has to handle potentially dangerous debris, and it features HEPA filtration to meet MRV8 air quality standards.
Technical Support	On-call technical support service department; nationwide and international technical support teams can be deployed for repairs or maintenance.
Compliance	Global Safety and EMC Standards, Global Environmental Requirements, GMA, NIOSH, and OSHA workplace compliance. HEPA filtration meets MRV8 air quality standard