

MEDIAVISE[®] COMPACT COMBO DESTROYER

One Solution For Every Drive.



ACCEPTABLE MEDIA



HDD



ENTERPRISE-HDD



SSD



ENTERPRISE-SSD



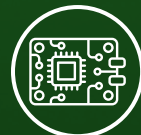
USB/ FLASH DRIVE



PHONES



CD/DVD



CIRCUIT BOARDS

How it Works:

Powered by Phiston's proprietary hydraulic crushing system with a patented hybrid plate, the MVC-CMB delivers 20 tons (40,000 lbs) of destructive force to crush and demolish every square inch of any HDD or SSD in under 30 seconds, with destroyed media ejected directly into the included collection bin for completely hands-off operation.

Key Features & Benefits:

- **One hybrid destruction plate crushes both HDDs and SSDs**, no adapters or plate changes needed.
- **Fully destroys any drive** in less than 30 seconds.
- **Fully automated**, hands-off operation for user safety.
- **Comes standard** with a debris collection bin. Optional debris chute available for continuous discharge.
- **No special adapters needed** for power or for crushing various media.
- **Automatic unjam and restart**, plus manual unjam override.
- **Will not operate if lockout doors are not fully engaged**, preventing user error.

DESTRUCTION MECHANISM

Hydraulic Crushing

20 tons (40,000 lbs) with a patented hybrid plate for both HDDs and SSDs.



MVC-CMB

NSA/CSS Approved



1- Feed Port



2- Control Panel



3-Debris Drawer



NIST
SP 800 - 88

ISO
9001 | 14001 | 45001

DIN
66399

All In One Destruction Technology

A compact all-in-one destroyer engineered to handle HDDs, SSDs, and all media types with a single hybrid plate, no swapping required.

MVC-CMB

MEDIAWISE® COMPACT COMBO DESTROYER

Specifications:

Media Accepted

HDD, Enterprise HDD (HAMR, MAMR), SSD, Enterprise SSD, USB/Flash Drive, Cell Phone, CD/DVD/Blu-Ray.

Media Sanitization Modality

Hydraulic crushing platform with patented hybrid plates delivering 20 tons (40,000 lbs) of destructive force to destroy HDDs, SSDs, and all media types.

Hourly Throughput

120 drives per hour.

Cycle Time

30 seconds per drive.

Waste Collection

Collection bin holds 1 x 3.5" HDD or 2 x 2.5" HDDs. Optional chute for continuous discharge.

Media Feeding

Gravity-assisted, top-loaded manual feed port, 5.75" x 1.25" x 4" (15 cm x 3 cm x 10 cm), one device at a time.



Dimensions / Weight

26.5" x 14" x 19" (68 cm x 36 cm x 49 cm) (L x W x H)
140 lbs. (63.5 kg) - 110-volt model / 220-volt model

Electrical Power

220 Volts A.C. ±10%, 50/60 Hz, 7.5 Amps
110 Volts A.C. ±10%, 50/60 Hz, 15 Amps
Factory-configured for any international power supplies.

Operating Temperature

40-100°F (4-37.8°C)



Real people. Real help.
24/7 nationwide and worldwide.





TRUSTED BY INDUSTRY LEADERS WORLDWIDE:

FORTUNE 500 COMPANIES

GOVERNMENT ENTITIES

FINANCIAL INSTITUTIONS

ITAD PROVIDERS

GLOBAL ENTERPRISES



GET IN TOUCH:

www.phiston.com | +1 305-517-1744 | info@phiston.com